

Integrated Long-Term Plan Presentation



Gil Quiniones
President & CEO
ComEd



Interviewer
Michael del Castillo
Senior Finance Reporter
Fortune



November 19, 2024

Chief Executives for Corporate Purpose

2024 CECP 12th CEO Investor Forum

Cautionary Statements Regarding Forward-Looking Information

This presentation contains certain forward-looking statements within the meaning of federal securities laws that are subject to risks and uncertainties. Words such as “could,” “may,” “expects,” “anticipates,” “will,” “targets,” “goals,” “projects,” “intends,” “plans,” “believes,” “seeks,” “estimates,” “predicts,” “should,” and variations on such words, and similar expressions that reflect our current views with respect to future events and operational, economic, and financial performance, are intended to identify such forward-looking statements. Any reference to “E” after a year or time period indicates the information for that year or time period is an estimate. Any reference to expected average outstanding shares is exclusive of any equity offerings.

The factors that could cause actual results to differ materially from the forward-looking statements made by Exelon Corporation and Commonwealth Edison include those factors discussed herein, as well as the items discussed in (1) the Registrants' 2023 Annual Report on Form 10-K in (a) Part I, ITEM 1A. Risk Factors, (b) Part II, ITEM 7. Management's Discussion and Analysis of Financial Condition and Results of Operations, and (c) Part II, ITEM 8. Financial Statements and Supplementary Data: Note 18, Commitments and Contingencies; (2) the Registrants' Third Quarter 2024 Quarterly Report on Form 10-Q (filed on October 30, 2024) in (a) Part II, ITEM 1A. Risk Factors, (b) Part I, ITEM 2. Management's Discussion and Analysis of Financial Condition and Results of Operations, and (c) Part I, ITEM 1. Financial Statements: Note 11, Commitments and Contingencies; and (3) other factors discussed in filings with the SEC by the Registrants.

Investors are cautioned not to place undue reliance on these forward-looking statements, whether written or oral, which apply only as of the date of this presentation. None of the Registrants undertakes any obligation to publicly release any revision to its forward-looking statements to reflect events or circumstances after the date of this presentation.

Exelon Overview

6 T&D-only utilities

Operate within seven regulatory jurisdictions

4 major metro areas served

Chicago, Philadelphia, Baltimore, and Washington D.C.

20,000

Employees across our operating companies

10.7 million⁽¹⁾

Electric and gas customers served across our service territories

25,600

Square miles of combined service territory across our jurisdictions

184,300

Circuit miles of electric and gas distribution lines

11,160

Circuit miles of FERC-regulated electric transmission lines

\$21.8 billion

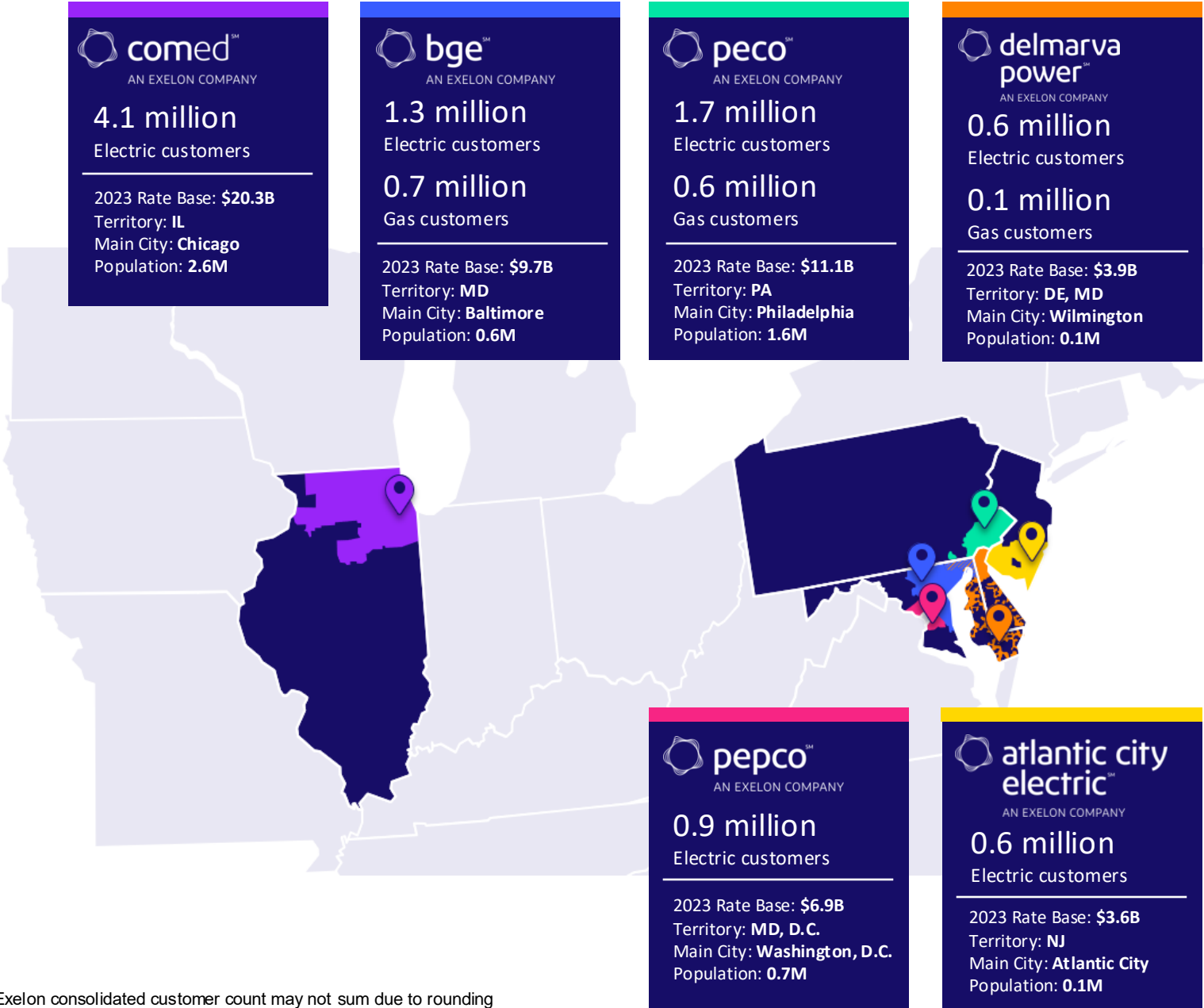
Operating revenues recorded at our utilities in 2023

\$60.3 billion

Rate base estimate for 2024

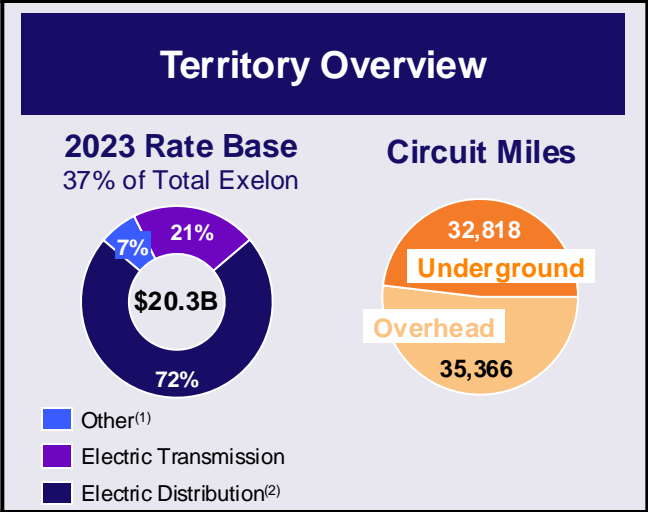
\$34.5 billion

Projected capital investment over 2024 through 2027



(1) Customer count reflects the sum of Exelon's total gas and electric customer base; Exelon consolidated customer count may not sum due to rounding

ComEd Overview



Key State Policies & Goals

Climate & Equitable Jobs Act (CEJA)

Transition to Clean Energy
Path to 100% clean energy by 2045 & enables ComEd load to be supplied by clean generation by 2026

Decarbonization through Energy Efficiency and Beneficial Electrification
Accelerates the adoption and uptake of EVs and other technologies

Community Support Transition
Expands low-income renewable energy funding and increases energy assistance

Equitable Workforce Development

\$180M
Annual energy transition funds

1M
EVs expected by 2030

\$130M
Energy transition training/mentoring

Performance Highlights

Reliability
Named nation's most reliable utility in 2023 by PA Consulting

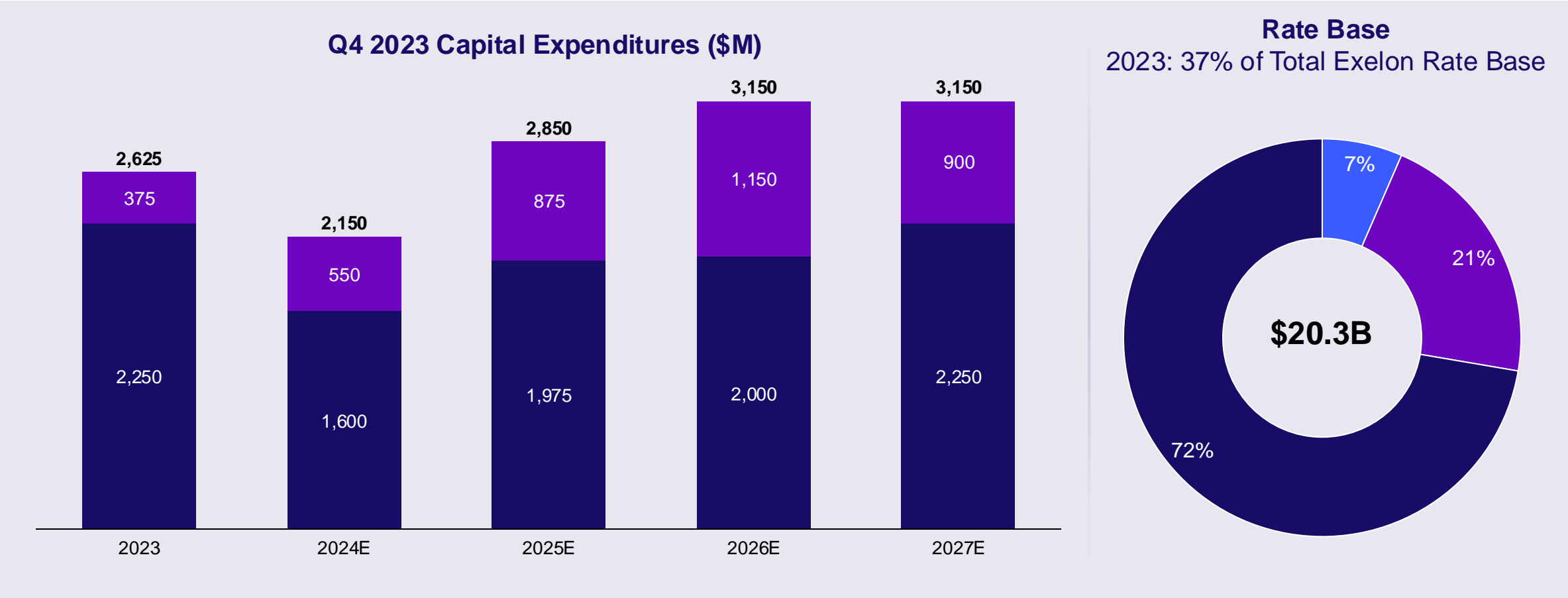
Efficiency
Since 2008, nearly \$10 billion in savings for ComEd customers

Resiliency
Top decile performance on frequency of outages and duration

Affordability
Commercial and industrial customers' average bills 19% and 44% less, respectively, than bills in the top-20 metropolitan areas in 2023.

Note: reflects most recent available data as of November 8, 2024; Territory Overview reflects data as of 2023 10-K
 (1) Other includes ComEd's long-term regulatory assets (Energy Efficiency & Solar Rebate program) recovered under separate tariffs, which earn a full authorized Rate of Return. See Note 3 – Regulatory Matters in 2023 10-K for additional detail.
 (2) Electric distribution rate base includes regulatory assets that earn a full authorized Rate of Return; regulatory asset spend not reflected in capital spend projections.

ComEd Investment Outlook



■ Other⁽¹⁾
■ Electric Transmission
 ■ Electric Distribution⁽²⁾

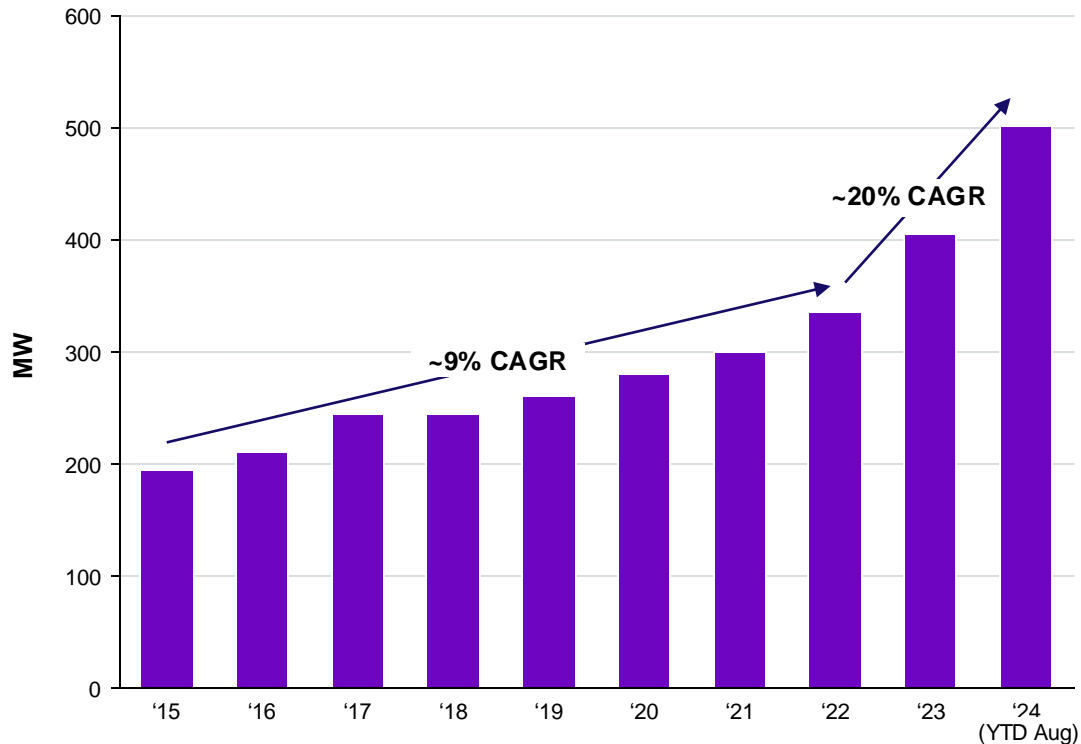
Project ~\$11.3B of capital being invested from 2024-2027

Note: Numbers rounded to nearest \$25M and may not sum due to rounding. Rate base reflects year-end estimates. Q4 2023 disclosures dated February 21, 2024.
 (1) Other includes ComEd's long-term regulatory assets (Energy Efficiency & Solar Rebate program) recovered under separate tariffs, which earn a full authorized Rate of Return. See Note 3 – Regulatory Matters in 2023 10-K for additional detail.
 (2) Electric distribution rate base includes regulatory assets that earn a full authorized Rate of Return; regulatory asset spend not reflected in capital spend projections.

A Proven Leader in the Data Center Market

Powering Data Center Growth

Historical Data Center Load in Northern IL⁽¹⁾



Why Chicago?

Data Center Desired Attributes

- ✓ Convergence of fiber optic networks
- ✓ Central location
- ✓ Abundant fresh water
- ✓ Safer from natural disasters
- ✓ State-level tax incentives (since 2019)
- ✓ High-quality service and nation-leading reliability at competitive rates



SITeseLECTION

Northern Illinois recognized as a top 5 data center market in the U.S.

ComEd once again recognized as one of the Top 20 utilities in economic development

Focus on reliability, affordability, and speed to market has positioned ComEd to support the growing economic development opportunities that rely on the grid

(1) Source: PJM 2025 Large Load Adjustment Proposal <https://www.pjm.com/-/media/committees-groups/subcommittees/las/2024/20241025/20241025-item-03d--exelon-large-load-request.ashx>

ComEd is Home to a Robust Pipeline of New Business

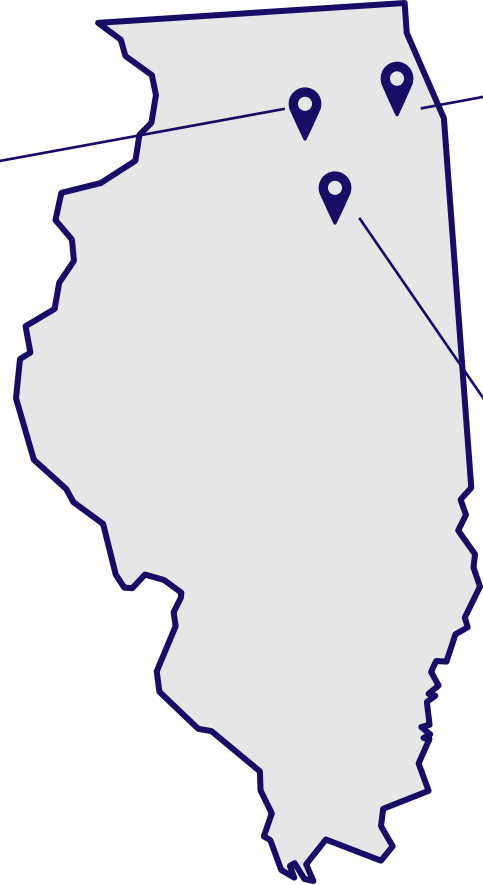
Meta DeKalb Data Center



Illinois Quantum and Microelectronics Park



Gotion EV Battery Manufacturing Plant



ComEd's economic development in Illinois – driven by industry-leading reliability, legislative support, and competitive rates – creates tremendous opportunity for continued investment to support high-density load growth



comedSM

AN EXELON COMPANY



CEO
Investor
Forum